

For the future of medicine

www.campusberlinbuch.de

Berlin: Locations of future innovation



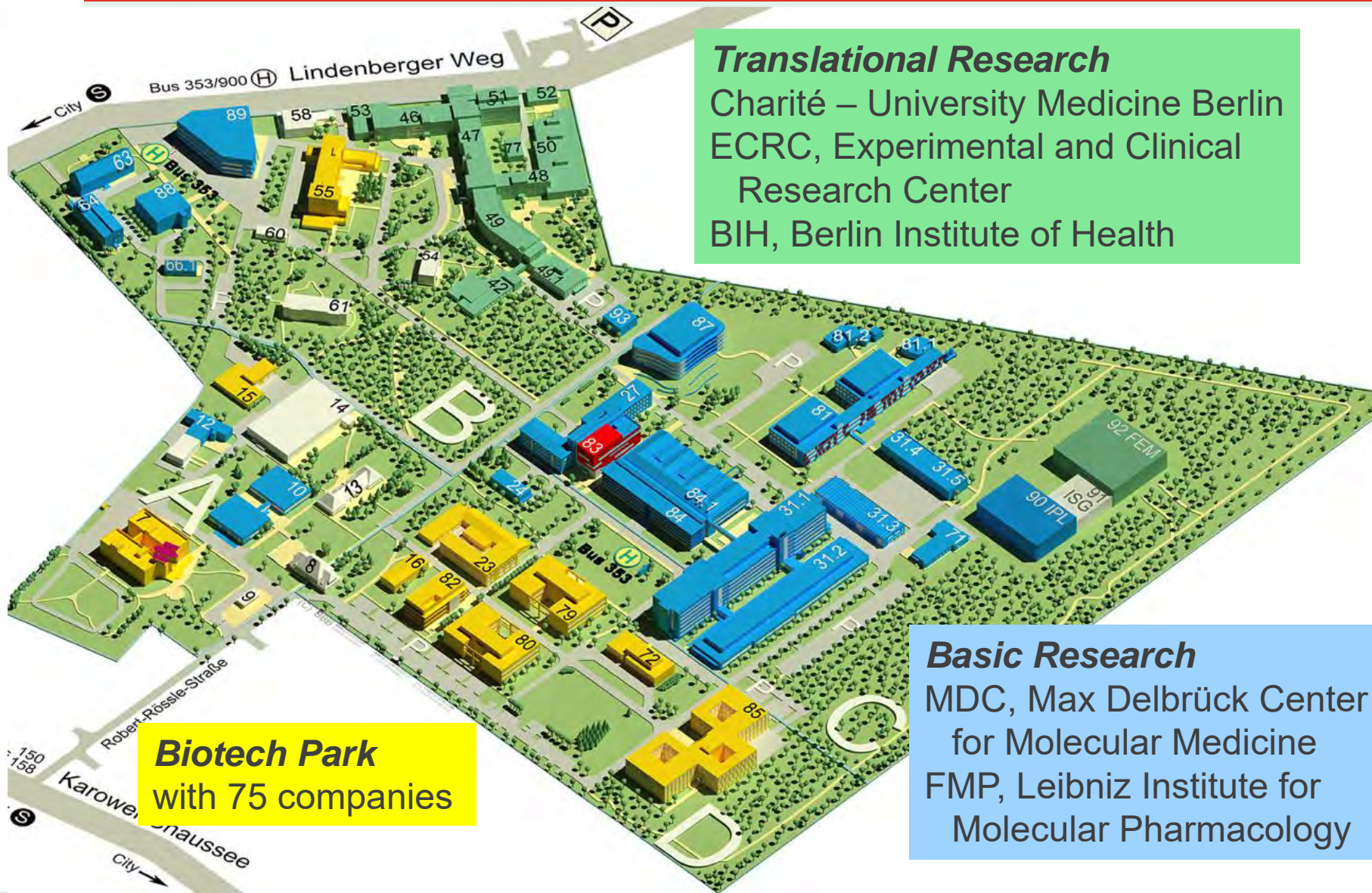


- ❖ Research
- ❖ Innovation
- ❖ Patient care



- ❖ Education
- ❖ Living

Campus Berlin-Buch: Excellent basic science



Translational Research

Charité – University Medicine Berlin
ECRC, Experimental and Clinical
Research Center
BIH, Berlin Institute of Health

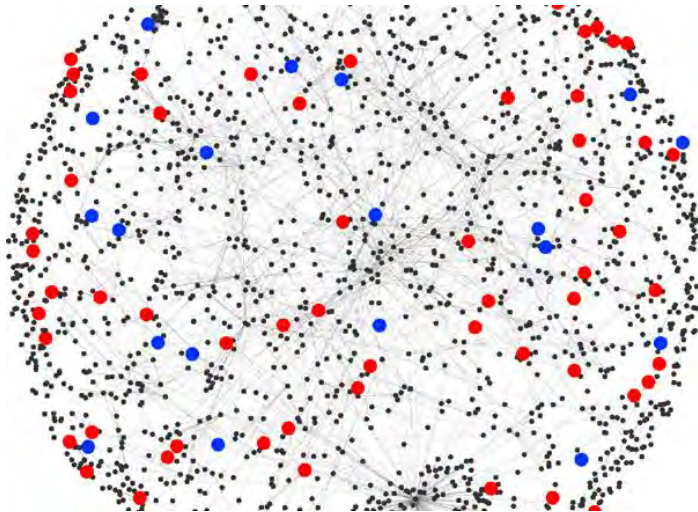
Biotech Park
with 75 companies

Basic Research

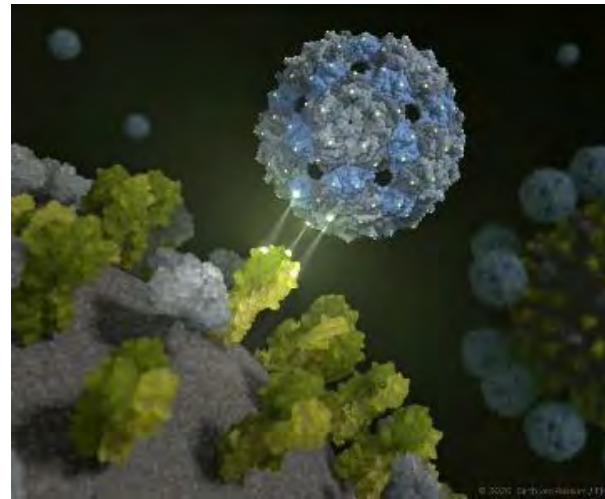
MDC, Max Delbrück Center
for Molecular Medicine
FMP, Leibniz Institute for
Molecular Pharmacology

Exellent basic science

- ❖ **Molecular Medicine**
MDC
– disease mechanisms



- ❖ **Molecular Pharmacology**
FMP
– chemical biology –

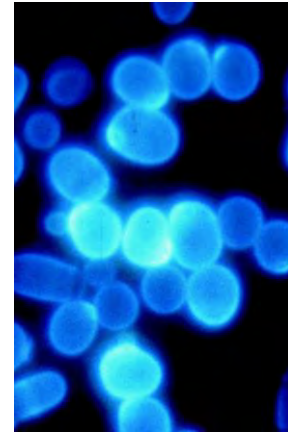


- ❖ 1,200 scientists
from 60 nations



Clinical research

- ❖ **Clinical Research Unit**
supporting IIT and
Drug studies
- ❖ **Out Patient Clinics**
highly specialized
with 5,000 patients
per year
- ❖ **Epidemiology**
part of national studies
- ❖ **GMP facility**
for cell therapy
products
- ❖ **MR Imaging**
3 & 7 Tesla MR
scanner
- ❖ **Biobank**
fully automated



Scientific technology platforms

Imaging

Light microscopy
MRI
EM
NMR
Kryo-EM

Animal models

Generation of genetic
modified models
(mice, rats)

Omics

Genomics
Proteomics
Metabolomics

Etc.

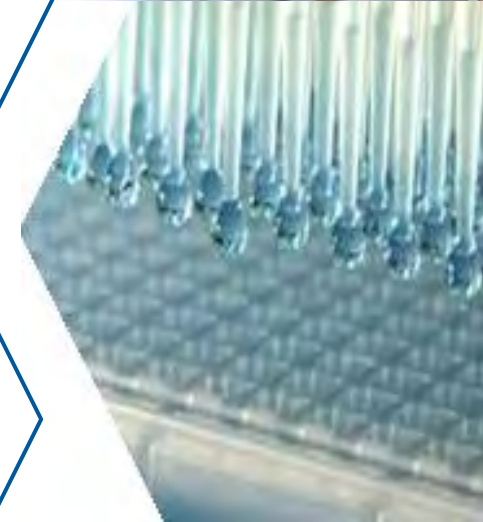
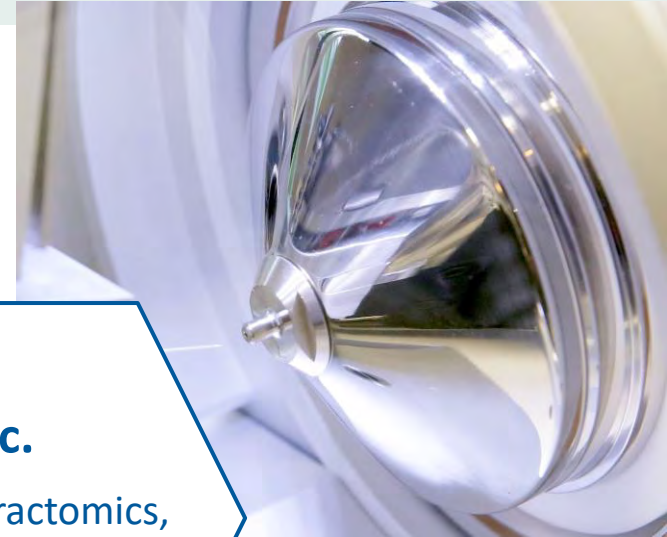
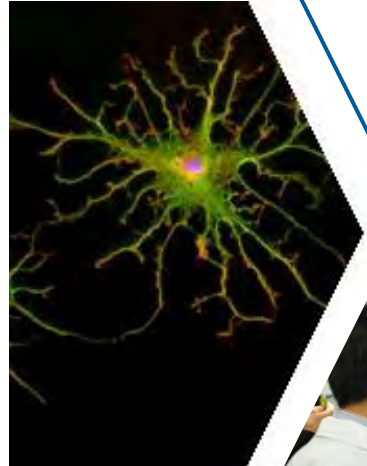
FACS, Interactomics,
Microarrays, Protein
Sample Production

Pathophysiology
& Phenotyping

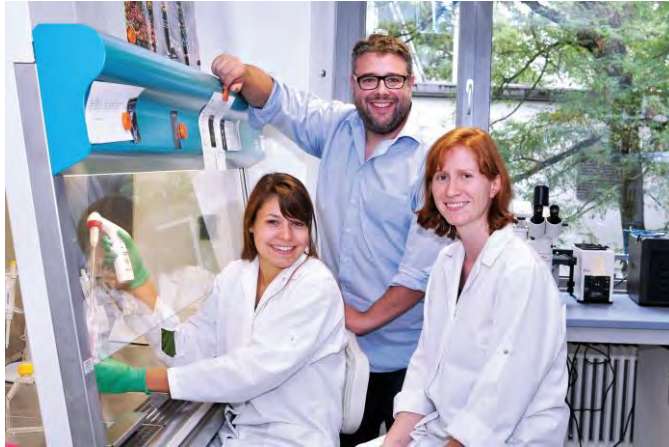
iPSCs

Bio-
informatics

Chemical
Biology &
Screening



BiotechPark Berlin-Buch



**Inspiring
life science
community**



- ❖ **5** high tech lab buildings
- ❖ **75** companies / **830** employees
- ❖ **220** Mio. Euro revenue per year
- ❖ **31,000 sqm** lab and office space
- ❖ Cutting edge products

75 companies

Medical Technology

Eckert & Ziegler AG,
MRI Tools, Pentixa-
pharm GmbH

Other

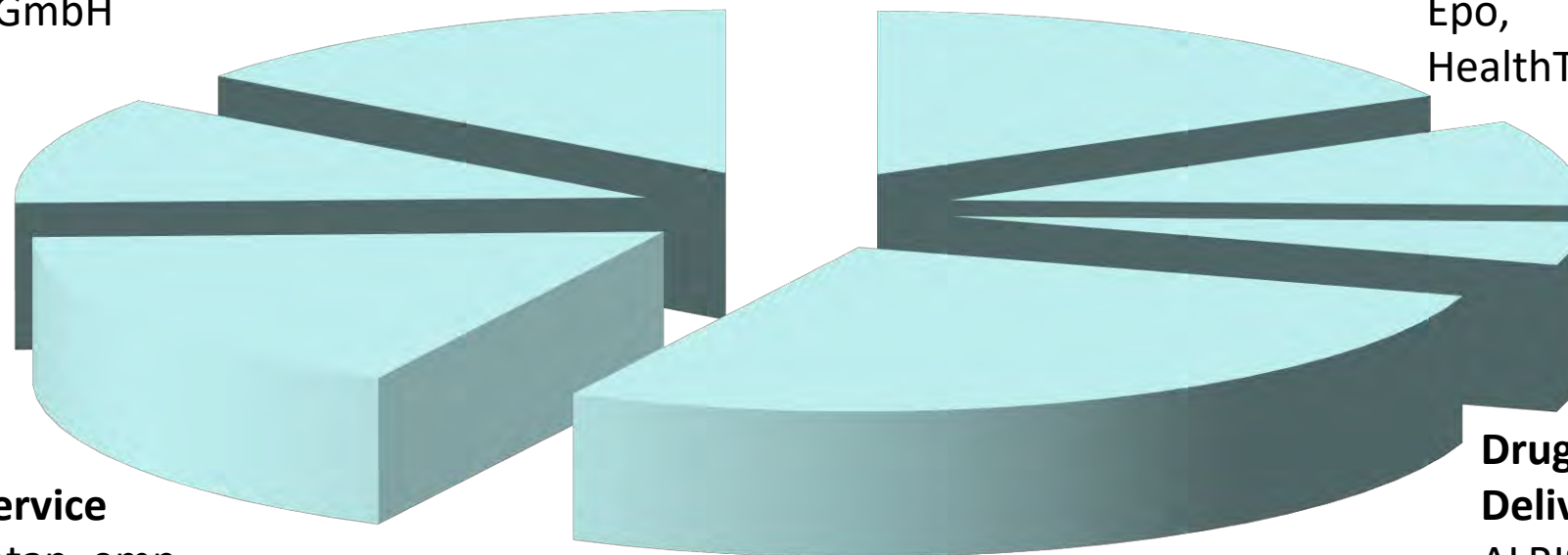
Ascenion, Tax
Consultants

Drug Development

BerlinCures, T-Knife, Glycotope,
MerLion, Omeicos, Silence,

Drug Discovery Service

CellPhenomics,
Epo,
HealthTwist



B2B Service

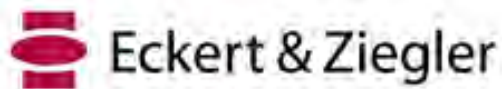
Biosyntan, emp
biotech, Lipidomix,
FyoniBio, Roboklon

Molecular Diagnostic

IST Innuscreen, BioTeZ, Congen, Invitek

Drug Delivery

ALRISE,
Celares



New space for innovation



BERLIN
BIO
CUBE

Opening October 2023

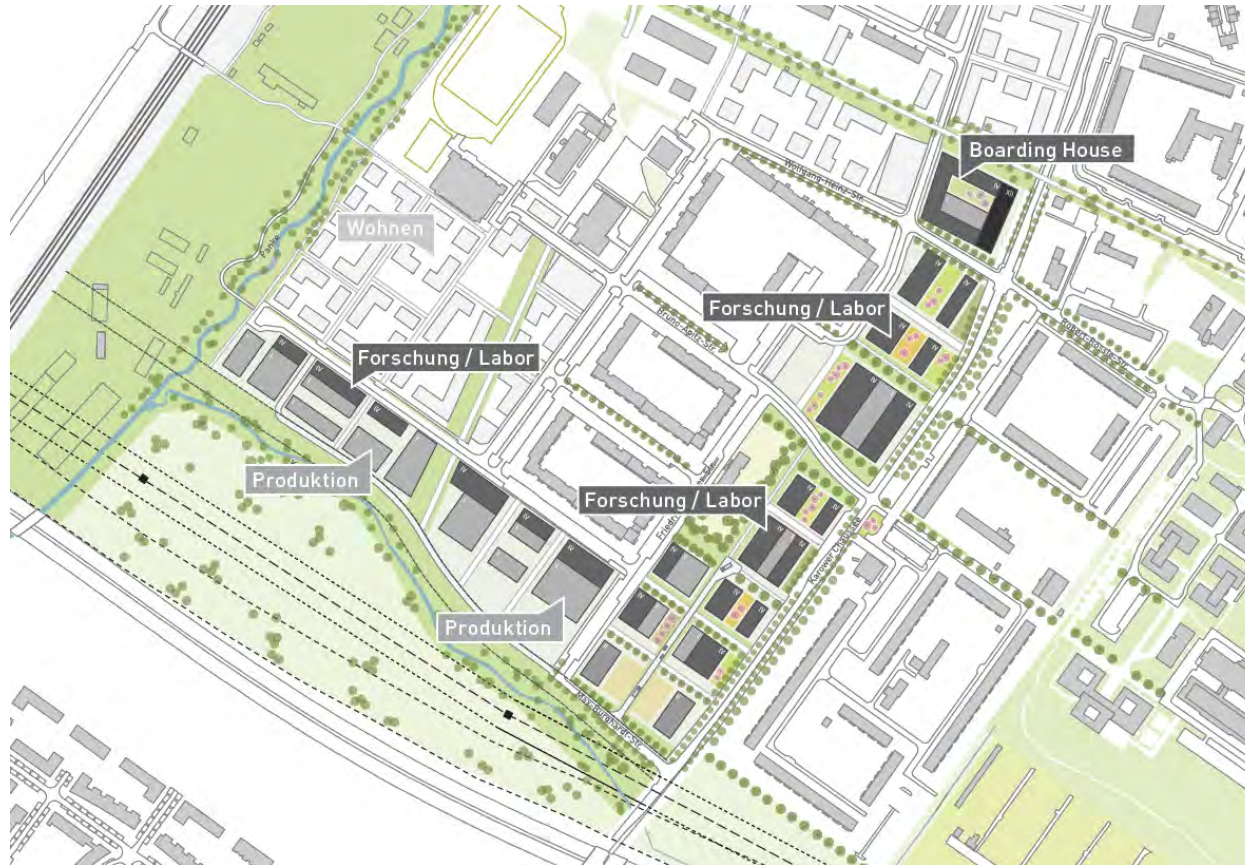


- ❖ Ca. 8,000 sqm
- ❖ Modern labs and offices
- ❖ Common areas
- ❖ Flexible modular units



www.berlinbiocube.de

Extension area of the BiotechPark



Additional land will be available in direct neighborhood to the Campus

- ❖ Property surface: **86,000 sqm**
- ❖ Possible effective area: **36,000 sqm**
- ❖ Possible total floor area: **93,000 sqm**



- ❖ Maximum-care hospital: **Helios**
- ❖ Specialty clinics for lung- and rheumatic diseases
- ❖ **3,500** employees
- ❖ **1,250** beds
- ❖ **220,000** patients per year

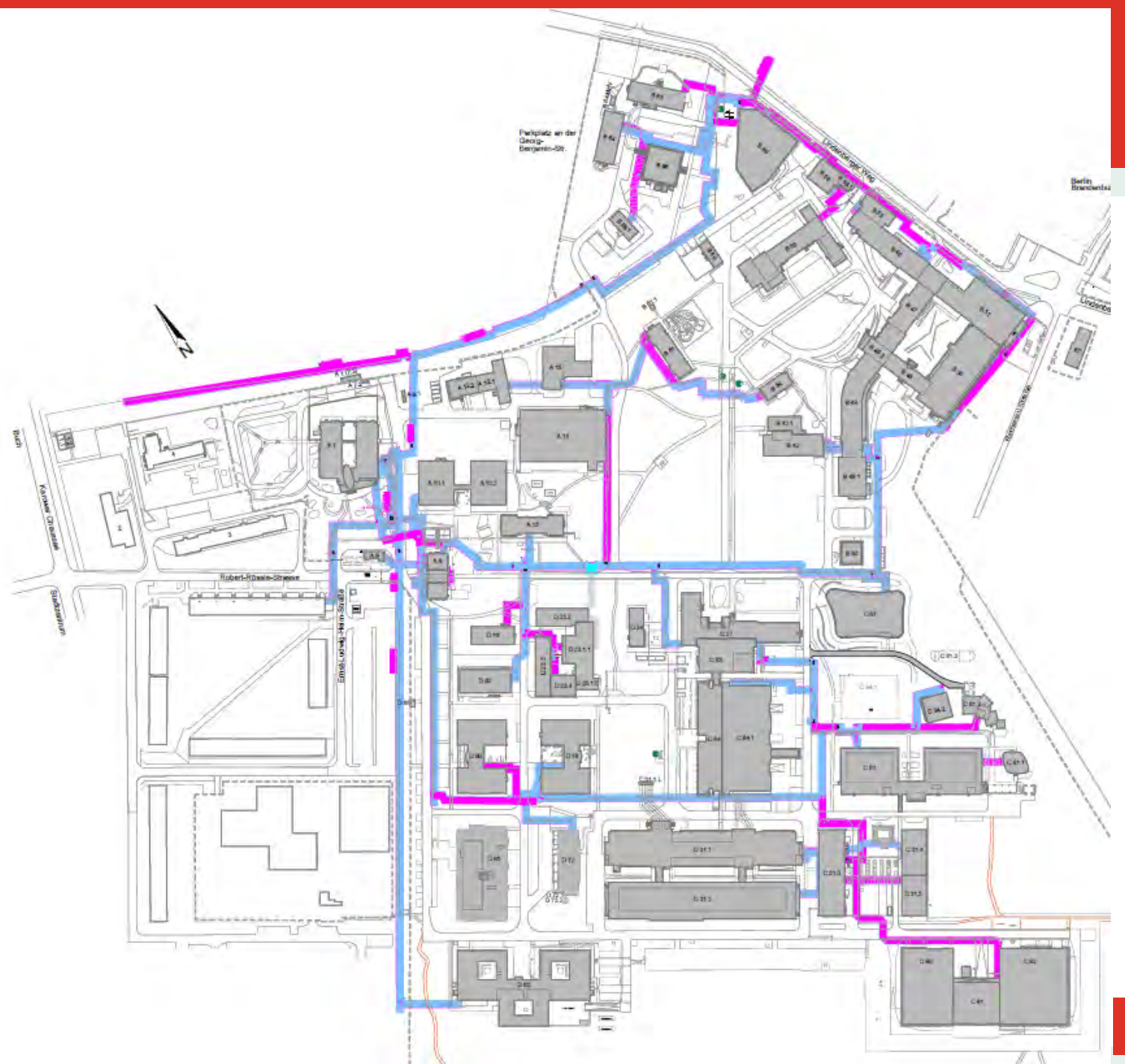


- ❖ School learning lab:
14,000 school pupils
per year



- ❖ Modern residences
- ❖ Historical residences





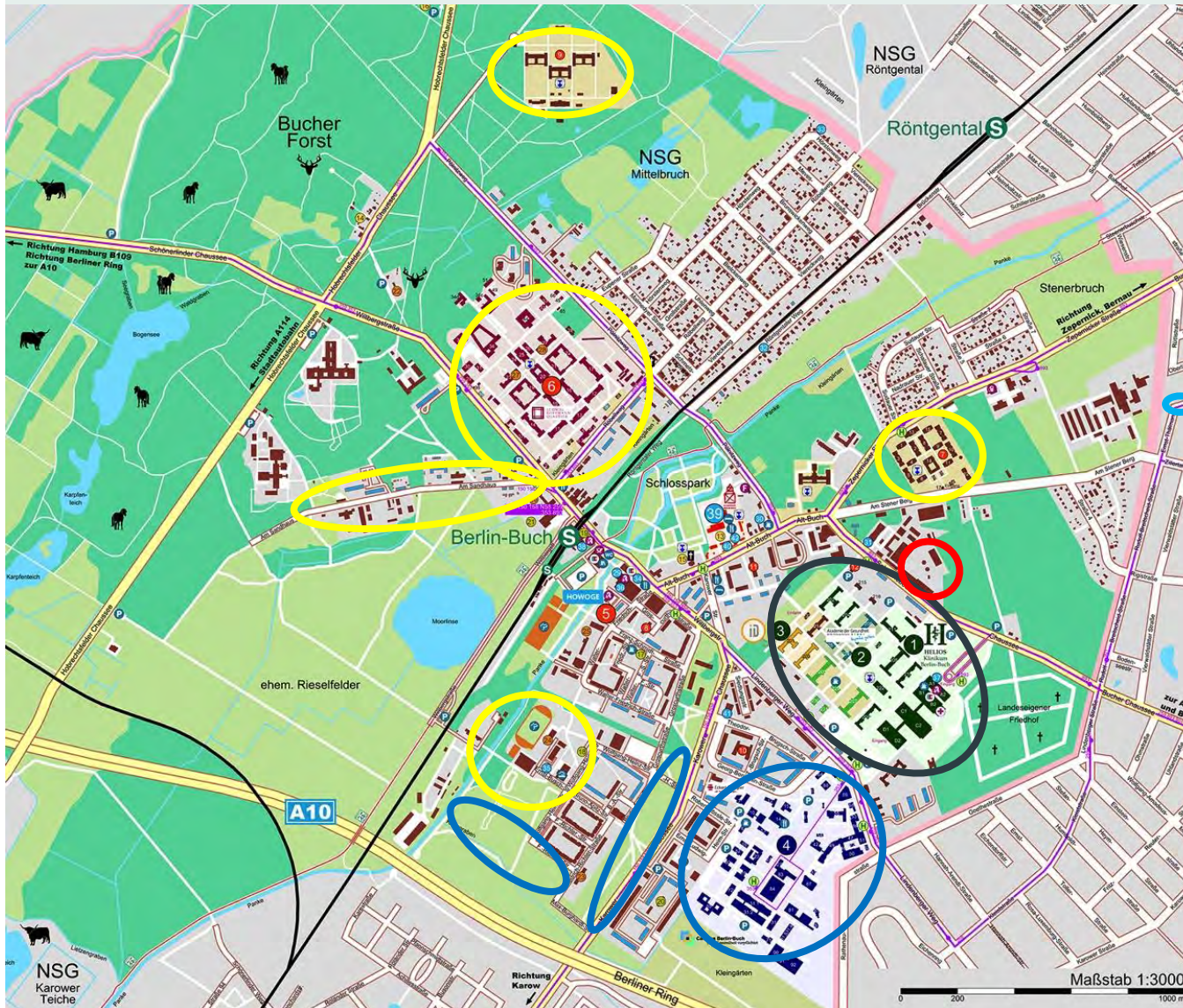
❖ Stromsektor

- Einsatz neuer Technik (Kälteerzeugung, Ventilatoren)
- Optimierung der Anlagen, z.B. Austausch zu groß dimensionierter Pumpen
- Seit 2020 Bezug von 100% Grünstrom

❖ Wärmesektor

- Optimierung der Anlagen
- Gemeinsames Projekt mit der TU Berlin, BMWi gefördert, zur Senkung der Rücklauftemperaturen
- **RENEVAC: Machbarkeitsstudie zur Tiefen Geothermie mit GFZ Potsdam**

Health location Berlin-Buch



- ❖ Science and BiotechPark Campus Berlin-Buch
- ❖ Expansion of Campus Berlin-Buch
- ❖ Hospital Campus
- ❖ Residential parks in historic hospital areas
- ❖ Expansion and compaction of residential areas
- ❖ Power station Vattenfall

- ❖ Ältester Berliner Standort mit lokalem Wärmenetz
- ❖ Vor rund 110 Jahren in Betriebnahme erstes Heizkraftwerk, um nahe liegende Krankenhäuser mit Wärme zu versorgen
- ❖ Heute: rund 25 Kilometer langes Wärmenetz
- ❖ Campus Buch
- ❖ Helios-Kliniken
- ❖ rund 10.000 Wohnungen

Berlin-Buch: For the future of medicine



Many thanks for your attention.



Contact

Dr. Christina Quensel, CEO
Dr. Ulrich Scheller, CEO

Campus Berlin Buch GmbH
Robert-Rössle-Straße 10
D-13125 Berlin

Phone: +49 (0)30 9489 2511
Fax: +49 (0)30 9489 3812

Mail: office@campusberlinbuch.de
Web: www.campusberlinbuch.de